

QY85KH汽车起重机 / Truck Crane

技术规格书

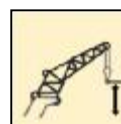
Technical specifications



85t



50.5m



72.3m

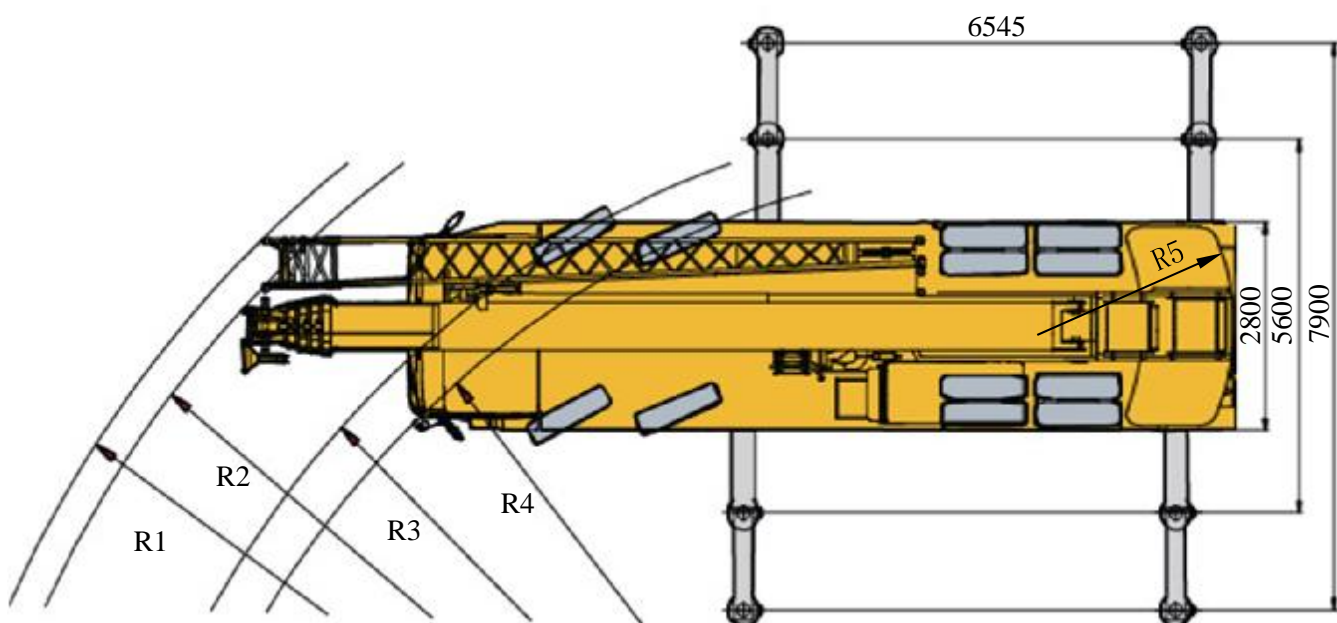
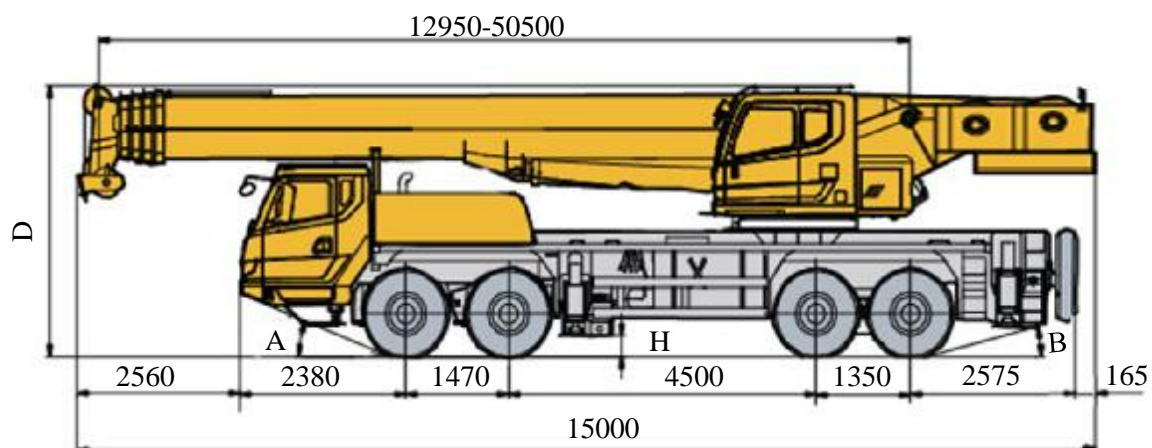


2021年05月03版

目录 Contents

目录 Contents	
尺寸参数 Dimensions	3
技术规格 Technical specifications	4-5
车型与选装件 Version and optional equipment	6
重量/作业速度 Weight / Working speeds	7
平衡重 Counterweight	8
臂架组合方案 Boom / Jib combinations	9-10
主臂 Boom	11-13
副臂 Jib	14-15
主臂加长节 Boom extension	16-17
符号标识 Description of symbols	18
主要技术参数表 Table of main technical parameters	19-20
注意事项 Notes	21

尺寸参数 Dimensions



	A	B	D	R1	R2	R3	R4	R5	H
12.00R24-20PR	19°	13°	3785	15250	14750	12000	11500	4465	307

技术规格

Technical specifications



底盘

车架	徐工设计、制造，全覆盖式走台板，防扭转箱型结构，高强度钢材制造。
支腿	4支腿，H形布置，采用双级水平支腿，水平伸缩和垂直伸缩由液压控制，底盘两侧装有电控操纵控制台，控制台板装有水平仪、照明灯和调速按钮，支腿油缸均设有单向阀，且垂直支腿带有双向液压锁。支脚盘尺寸：450×450mm 最大起重量时支腿反力：722kN
发动机	D10.38-50，直列六缸水冷电控柴油发动机，重汽，额定功率276kW/1900rpm，最大扭矩1560Nm/1200-1500rpm， 最大基准扭矩：1720N.m； 国五排放标准。 燃油箱容积：430L； 尿素箱容积：45L。
变速箱	陕齿机械式变速箱，9个前进档，1个倒档，带同步器。
车桥	名牌厂家高强度车桥，1,2桥转向，3,4桥驱动。
悬挂	桥采用钢板弹簧。中后桥采用橡胶弹簧悬架加V型推力杆结构，增加底盘行驶稳定性，减少轮胎的磨损。
轮胎	12个轮胎，1个备胎， 轮胎规格：12.00R24
制动	行车制动：双回路气压制动，作用于所有车轮。 驻车制动：弹簧储能制动，作用于2,3,4轴车轮。 辅助制动：发动机排气制动和缓速制动。
转向	1、2桥机械转向+液压助力。
驾驶室	新型复合结构驾驶室，全封闭、装备豪华舒适。性能上：优越的密封性和防腐蚀、防震设计；配置大视野的前挡风安全玻璃、后视镜，电控洗涤器，电子门窗升降器，带有除霜风挡的室内空气加热器，收放音机、丝网地垫等。副驾双座椅，可展开为简易卧铺。 2公斤灭火器；标配冷暖空调。
电气系统	直流24伏特，串联12伏特的电池组2个。 发电机，28伏特-80安培。



上车

结构	徐工设计、制造，高强度钢材制造。
液压系统	底盘发动机驱动变量柱塞泵，用于起升、变幅、伸缩。负载敏感式比例多路换向阀，带有抗冲击阀、防气蚀阀；风冷式液压油散热器； 液压油箱容积：1032L
操纵方式	液控先导操纵系统，由左右2个操纵手柄控制，由液压泵和比例阀进行液压先导式控制起重机的全部动作
主起升机构	液压控制调速，装有双折线绳槽卷筒，由液压马达通过行星齿轮减速器驱动，内置常闭式制动器并带有平衡阀；
回转机构	四点接触球式回转支承，由液压马达驱动行星齿轮回转机构减速器驱动，可连续回转360°；具有动力控制或自由回转的功能，可无级调速 回转杆设有鸣响开关；
变幅机构	单支双作用前置液压变幅油缸，带有平衡阀
操纵室	新型钢制操纵室，装有无视野死角的前景窗，安全玻璃，车窗装有遮阳板，推拉式车门，座椅靠背可倾斜定位，操纵杆安装在座椅两侧的扶手台上；带推拉踏板；前窗顶窗装有雨刮器 标配冷暖空调
安全装置	液压平衡阀；液压溢流阀；液压双向锁；力矩限制器；三圈保护器，防止钢丝绳过放；臂头设置高度限位，防止钢丝绳过卷；三色报警灯
组合配重	总重20t，共有1.8t、6.8t、7t、9.8t、14.8t、15t、20t共7种组合方式。



臂架系统

主臂	5节，“U”形截面的筒形焊接结构。双缸绳排伸缩机构 主臂长度：12.95m~50.5m。
臂端单滑轮	单滑轮，安装在主臂顶端用于单股钢丝绳起重作业，起重性能与主臂相同，但最大起重量不超过5.5t。
固定副臂	2节桁架式焊接结构，具有0°、15°、30°三种固定副臂安装角 固定副臂长度：9.5m/16m
主臂加长节	桁架式焊接结构，9m。

技术规格

Technical specifications

	Chassis		Superstructure
Frame	Designed and manufactured by XCMG, it is made of high strength steel with fully covered walking surface and anti-torsion box-typed structure.	Frame	Designed and manufactured by XCMG, made of high strength steel.
Outriggers	Four outriggers arranged in H-shape are hydraulically controlled by control levers. Double-stage outrigger beam is adopted. There is an outrigger control station located at each side of the chassis, and there is a level gauge, an illuminator and two speed buttons on each control station. There is a check valve fitted in each outrigger cylinder, and a double-way hydraulic valve fitted in each jack cylinder. Float dimension: 450×450mm Reaction force of outrigger at max. lifting load: 722 kN	Hydraulic system	Variable pump driven by chassis engine, used for hoisting, elevating and telescoping operations. Load sensing proportional multi-way change valve with impact resistance valve and cavitation-proof valve integrated; air-cooled hydraulic oil radiator. Tank capacity: 1032 L
Engine	D10.38-50, in-line, 6-cylinder, water cooled, electric control diesel engine, made by SINOTRUK, with rated power of 276kW/1900 rpm and max. torque of 1560Nm/1200-1500 rpm, Max.reference torque : 1720 N.m , compliant with China V emission standard. Fuel tank capacity: 430 L. AdBlue tank volume : 45L.	Control system	Pilot hydraulic control is used for controlling the superstructure. All crane movements are controlled by the hydraulic pump and proportional valve through two control levers on the left and right sides.
Transmission	SHAANXI RT-11509C mechanical transmission with 9-forward speed and 1- reverse speed and synchronizers.	Main winch system	Hydraulic control is used for speed regulation. The system is driven by a hydraulic motor through a planetary gear reducer, with a normally closed brake, a balance valve and a grooved drum equipped.
Axles	High strength axles, made by famous manufacturers. 1st and 2nd axles are for steering, and 3rd and 4th axles are for steering and driving.	Slewing system	Four-point contact-ball slewing ring is driven by the planetary gear reducer of slewing mechanism, which is driven by a hydraulic motor, and may continuously slew 360° . Power control and free slewing function as well as stepless speed regulation are available. There is a horn switch fitted on the slewing control lever.
Suspension	Leaf spring suspensions are adopted for front axle. Rubber spring suspensions with V-type push rods are adopted for medium and rear axles, leading to improved chassis stability and reduced tire wear.	Luffing system	A front support double-acting hydraulic cylinder is equipped for luffing operation, with a balance valve fitted.
Tires	12 tires and 1 spare tire. Tire specification: 12.00R24	Operator's cab	New steel cab with a full-view windshield, safety glass, sun shield and adjustable operator's seat. Windshield wiper and roof window wiper are fitted. Crane control levers are integrated into armrests. A sliding door and a pull-out step are designed for easy and safe access to the cab. Air conditioning and heater are standard.
Braking system	Service brake: double-circuit air pressure brake, acting on all wheels; Parking brake: spring-loaded brake, acting on wheels of axles 2,3 and 4. Auxiliary brake: engine exhaust brake, engine retarder brake	Safety devices	Hydraulic balance valve, hydraulic relief valve, double-way hydraulic valve, LMI, lowering limiter for preventing wire rope from over-releasing, anti-two block at boom head for preventing wire rope from over-winding and tri colored light bar
Steering system	Mechanical steering mechanism with a hydraulic booster for 1st and 2nd axles.	Combined counterweight	Total weight is 20 t, and seven counterweight combinations of 1.8 t, 6.8 t, 7 t, 9.8 t, 14.8 t, 15 t and 20 t are available.
Driver's cab	New full-dimension enclosed cab, luxury and comfort. It is designed to be leakproof, anti-corrosive and shockproof. It is equipped with a windshield offering outstanding visibility, electrical adjustable rear mirrors, electric control washer, electronic lifters of doors and windows, air heater with defrosting function, radio player and new floor mat, etc. The co-driver's seat may be changed into a simple sleeper. A fire extinguisher of 2 kg is available. Heater and air conditioner are standard.	 Boom system	
Electrical system	24 V DC, two sets of 12 V battery in series. Generator: 28 V-80 A	Boom	5-section boom with U cross-section, welding structure. Double-cylinder plus ropes telescoping system Boom length: 12.95m~50.5m.
		Single top	Installed at the boom top, used for single line operation. Its lifting performance is the same with that of boom, but the max. lifting load can not exceed 5.5t.
		Fixed jib	Two-section lattice jib, welded structure. Three offset angles of 0° , 15° and 30° . Fixed jib length: 9.5 m/16 m
		Boom extension	Lattice welding structure, 9 m.

车型与选装件

Version and optional equipment

车型 Version	功能描述 Function description	选择 Selection
标准型 Standard	五节主臂50.5m , 固定副臂16m 5-section boom of 50.5 m, fixed jib of 16 m	

注释：该产品仅标准型一种车型。

Note: only standard version is available for this model.

可选装件 Optional equipment		选择 Selection
吊钩 Hook block	35吨 35 t	
倒车影像 Backup camera		

重量 Weight



车桥 Axle	1	2	3	4	总重量 Total weight
t	10	10	13	13	46




1) 转台尾部携带1.8吨固定平衡重，其余活动平衡重,主吊钩不带；副钩固定在车架尾部；
1) The 1.8 ton Counterweight should be put on the chassis deck, not taking any other counterweight and main block;
The auxiliary block should be fastened in rear of the frame.







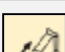
吊钩 Hook block	倍率 Parts of line	吊钩重量 Weight (kg)	吊钩尺寸 Dimensions (mm)	备注 Remarks
80t	12	700	1735×554×520	单钩 Single hook
35t	7	370	1600×520×370	单钩 Single hook
5.5t	1	150	717×370×370	单钩 Single hook

作业速度 Working speeds

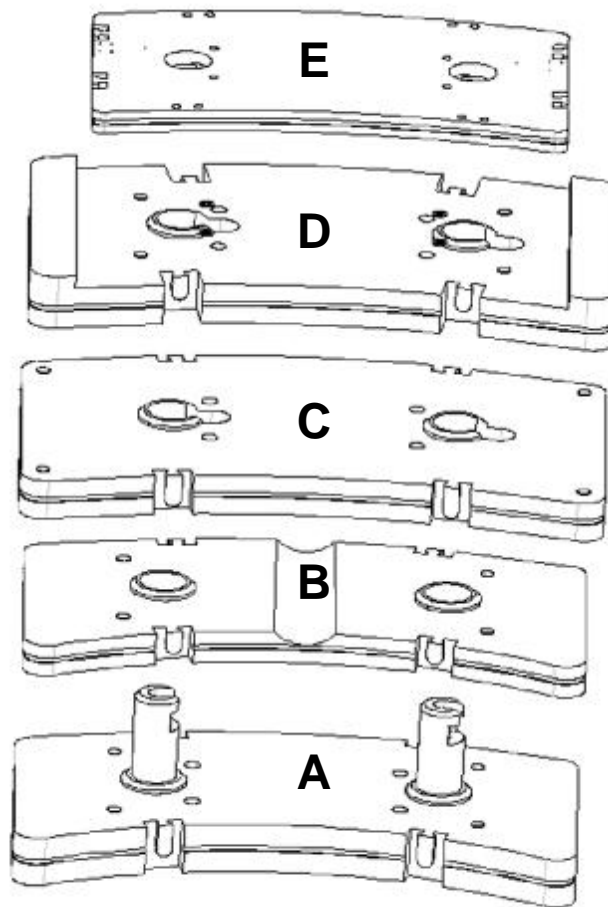


		
12.00 R 24	1 ~ 90	45%



作业机构 Operation mechanisms	作业速度 Working speed	最大单绳拉力 Max. single line pull	钢丝绳直径/长度 Rope diameter/ length
	0-135 m/min, 单绳, 第四层 m/min, single line, 4th layer	6.3t	20 mm/250m
	0-90 m/min, 单绳, 第四层 m/min, single line, 4th layer	6.3t	20 mm/180 m
	0-2 r/min		
	从-1°抬起至80°约55s Approx. 55s for boom luffing from -1 ° to 80°		
	从12.95m伸出至50.5m约125s Approx. 125s for boom extending from 12.95m to 50.5m		

平衡重 Counterweight

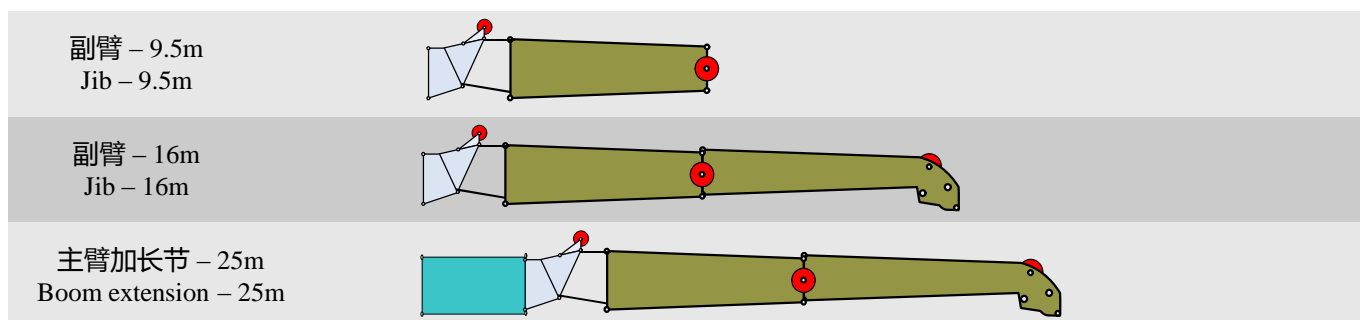


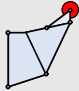



平衡重 Counterweight	A	B	C	D	E
尺寸 (长×宽×高) mm Dimensions (L×W×H) mm	2700×1416×680	700×1416×186	2700×1633×226	2700×1633×258	2200×1328×105
重量 t Weight t	5	3	5	5.2	1.8

工况模式 Working mode	20t	15t	14.8t	9.8t	7t	6.8t	1.8t
组合形式 Combinations	A+B+C+D+E	A+B+D+E	A+B+C+E	A+B+E	D+E	A+E	E

臂架组合方案

Boom / Jib combinations



部件 Component	结构形式 Structure	尺寸 (长×宽×高) mm Dimensions (L×W×H) mm	重量 kg Weight (kg)
连接架 Connection bracket		1910×740×1050	218
主臂加长节 Boom extension		9000×830×1400	600
一节副臂总成 First jib section assembly		8820×620×900	484
二节副臂总成 Second jib section assembly		6520×300×430	254

臂架组合方案

Boom / Jib combinations



主臂
Telescopic boom

T : 12.95~50.5m

副臂
Jib

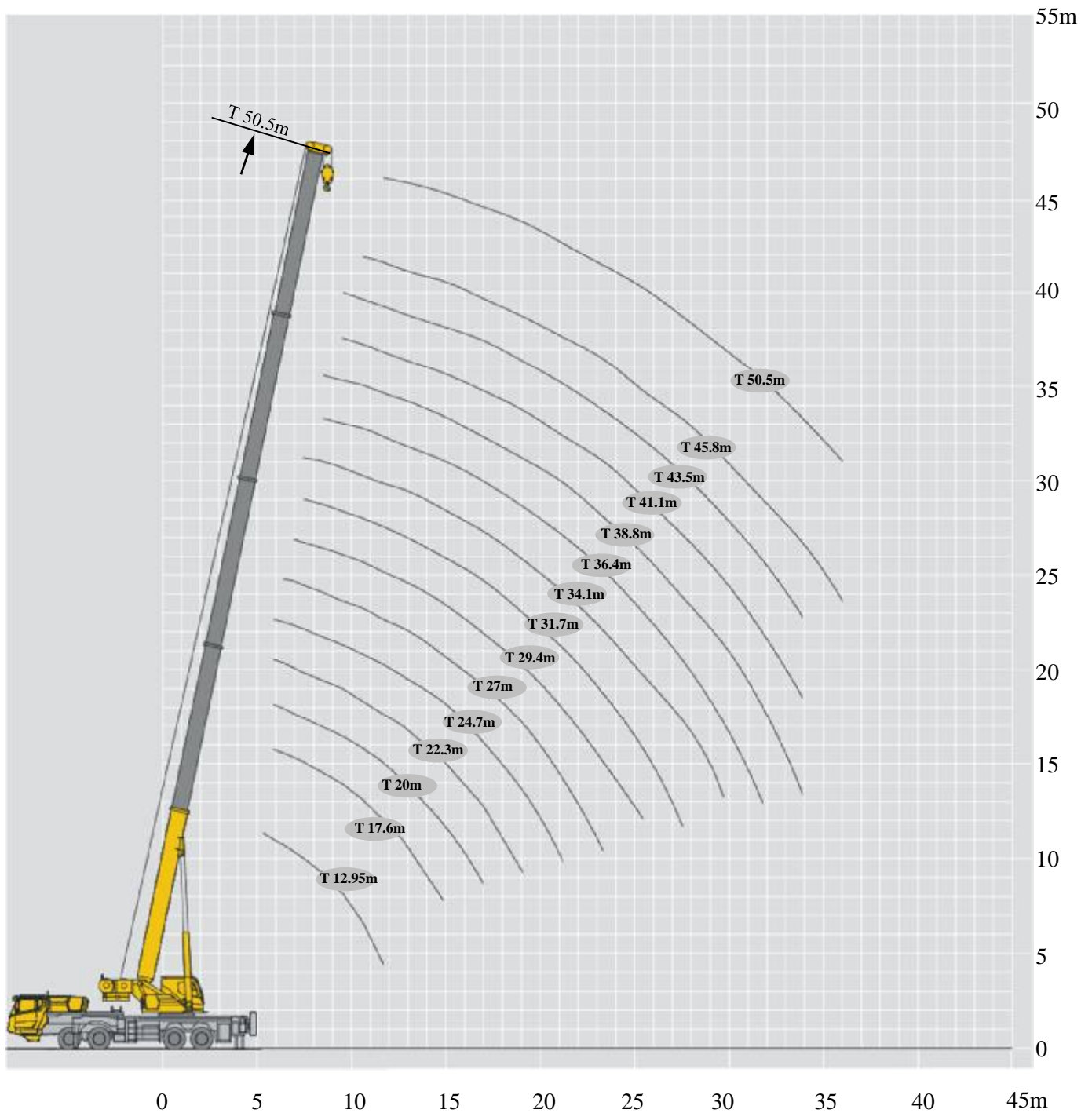
T : 50.5m
J : 9.5~16 m

主臂加长节
Boom extension

T : 50.5m
I : 9m
J : 9.5~16m

起升高度曲线图 Lifting heights

主臂
Boom



起重性能表

T 12.95~50.5m

Lifting capacities

	12.95-50.5m		6.545m×7.9m		360°		1.8t															
	12.95 m	17.6m	20m	22.3m	24.7m	27m	29.4m	31.7m	34.1m	36.4m	38.8m	41.1m	43.5m	45.8m	50.5m							
3	85.0 *	68.3														3						
3.5	71.4	67.2	34.0													3.5						
4	68.3	66.7	34.0													4						
4.5	62.5	62.5	34.0													4.5						
5	57.0	57.8	34.0	38.5	34.0	31.5										5						
5.5	54.2	48.3	34.0	38.5	34.0	30.5										5.5						
6	47.1	46.0	34.0	38.5	34.0	30.5	34.0									6						
7	32.3	31.5	33.1	31.0	33.8	27.3	33.0	28.0	20.5							7						
8	24.0	23.3	26.2	22.9	25.3	25.7	24.6	26.4	20.0	24.0						8						
9	18.6	18.0	20.7	17.6	19.8	21.6	19.2	20.8	18.4	20.2	19.0	16.4				9						
10	14.8	14.3	16.8	13.9	16.0	17.7	15.5	16.9	16.7	16.4	17.5	16.0	17.0	14.9		10						
12		9.5	11.8	9.2	11.0	12.6	10.5	11.9	13.0	11.4	12.4	13.3	11.9	12.8	12.3	12						
14		6.4	8.6	6.1	7.9	9.4	7.5	8.7	9.8	8.3	9.2	10.1	8.8	9.6	9.2	14						
16			6.4	4.0	5.8	7.2	5.3	6.5	7.6	6.1	7.0	7.9	6.6	7.4	7.0	16						
18				2.5	4.2	5.5	3.7	4.9	6.0	4.5	5.4	6.2	5.0	5.7	5.3	18						
20					3.0	4.3	2.6	3.7	4.7	3.3	4.2	5.0	3.8	4.5	4.1	20						
22						3.3	1.6	2.8	3.7	2.3	3.2	4.0	2.8	3.5	3.2	22						
24								2.0	3.0	1.6	2.5	3.2	2.1	2.8	2.4	24						
26								1.4	2.3	1.0	1.8	2.6	1.4	2.1	1.8	26						
28									1.8		1.3	2.0		1.6	1.2	28						
30												1.6		1.2		30						
32												1.2				32						

说明：*为名义载荷，表示起重机能力等级
 Note：* means capacity class

起重性能表

T 12.95~50.5m

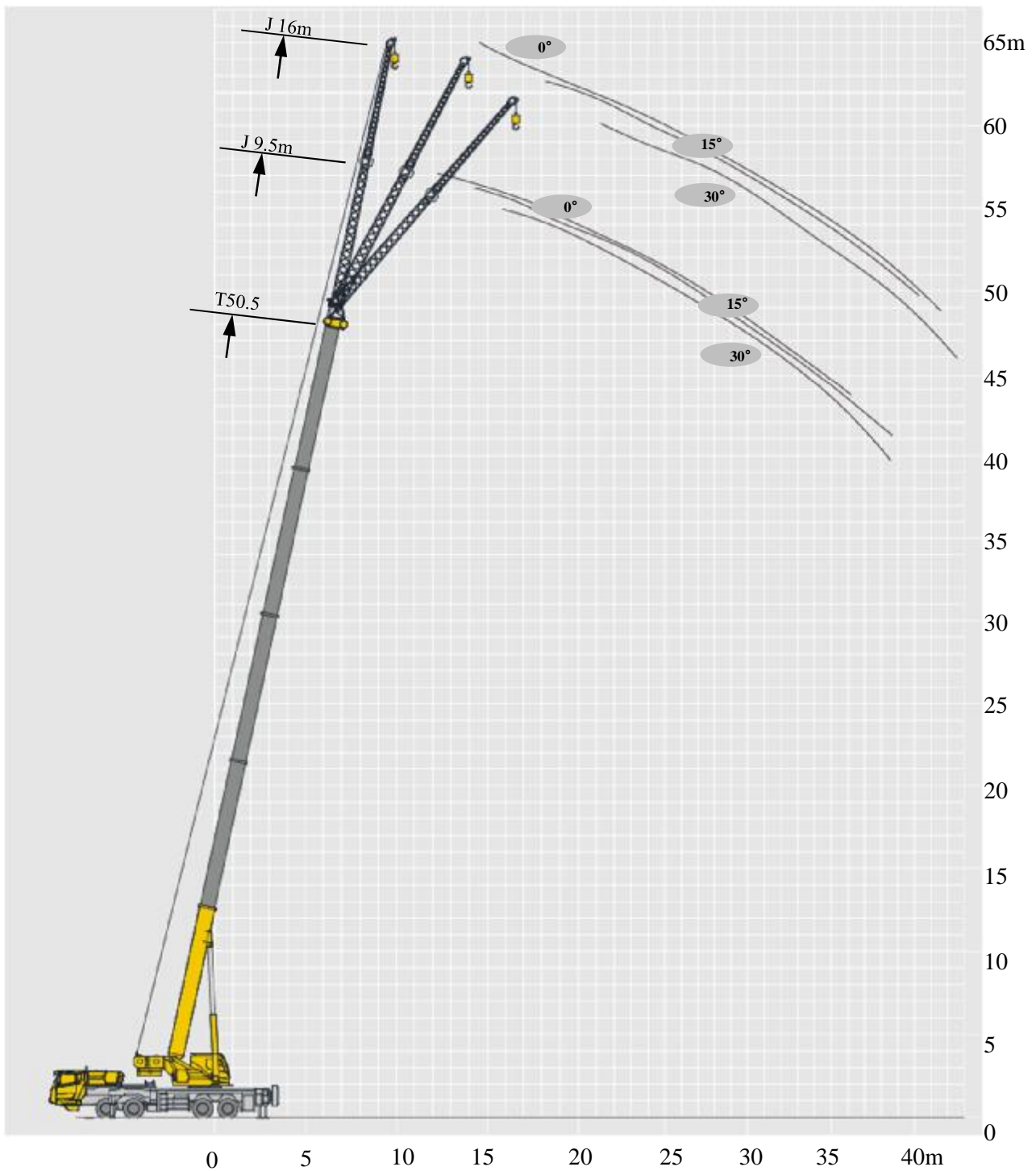
Lifting capacities

	12.95-50.5m		6.545m×7.9m		360°		20t															
	12.95 m	17.6m	20m	22.3m	24.7m	27m	29.4m	31.7m	34.1m	36.4m	38.8m	41.1m	43.5m	45.8m	50.5m							
3	85.0 *	68.3														3						
3.5	71.4	67.2	34.0													3.5						
4	68.3	66.7	34.0													4						
4.5	62.5	62.5	34.0													4.5						
5	57.0	57.8	34.0	38.5	34.0	31.5										5						
5.5	54.2	48.3	34.0	38.5	34.0	30.5										5.5						
6	47.5	46.0	34.0	38.5	34.0	30.5	34.0									6						
7	40.0	39.0	33.1	38.5	34.0	27.3	33.0	28.0	20.5							7						
8	34.0	33.0	32.0	33.0	33.0	25.7	30.0	27.0	20.0	24.0						8						
9	29.5	29.0	30.2	28.0	30.0	24.2	27.0	26.8	18.4	23.0	19.0	16.4				9						
10	25.0	25.5	27.1	25.0	27.0	22.6	24.4	25.0	16.7	21.5	18.4	16.0	18.1	14.9		10						
12		20.0	21.8	19.7	21.0	19.1	20.7	21.5	14.3	18.4	16.3	14.4	16.2	13.6	12.4	12						
14		15.0	17.1	14.7	16.6	15.8	16.1	17.3	12.3	15.9	14.7	13.1	14.5	12.3	11.3	14						
16			13.7	11.3	13.0	13.7	12.6	13.8	10.8	13.4	12.8	11.6	12.7	11.1	10.6	16						
18				8.7	10.5	11.6	10.1	11.3	10.5	10.8	11.7	10.6	11.2	10.2	9.8	18						
20					8.5	9.9	8.2	9.3	10.3	8.9	9.8	9.6	9.4	9.4	8.9	20						
22						8.3	6.7	7.8	8.7	7.4	8.2	8.8	7.8	8.5	8.0	22						
24							5.5	6.6	7.5	6.2	7.0	7.7	6.6	7.3	6.9	24						
26								5.5	6.5	5.2	6.0	6.7	5.6	6.3	5.9	26						
28									5.6	4.3	5.1	5.9	4.8	5.4	5.1	28						
30										3.6	4.4	5.1	4.0	4.7	4.4	30						
32											3.8	4.5	3.4	4.1	3.7	32						
34												3.9	2.9	3.5	3.2	34						
36													2.4	3.1	2.7	36						
38														2.6	2.3	38						
40															1.9	40						
42															1.6	42						

说明：*为名义载荷，表示起重机能力等级
 Note：* means capacity class

起升高度曲线图 Lifting heights

副臂
Jib



起重性能表

J 9.5m/16m

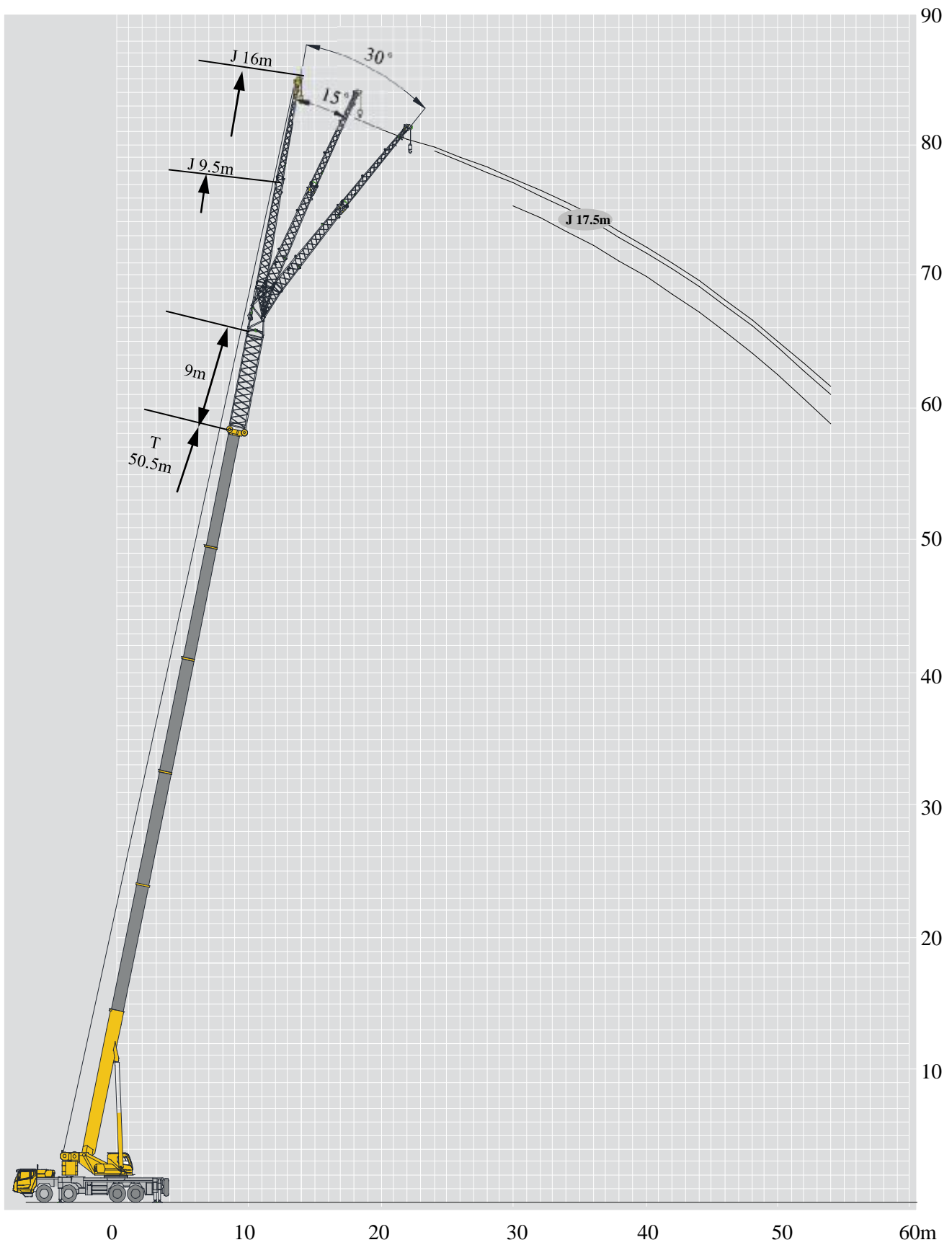
Lifting capacities

50.5m	9.5m/16m	6.545m×7.9m	360°	20t	J 9.5m/16m					
					9.5m			16m		
					0°	15°	30°	0°	15°	30°
80	5.5	5.0	3.2	3.0	2.4	1.5	80			
78	5.5	4.9	3.1	3.0	2.4	1.4	78			
75	5.4	4.8	2.8	3.0	2.2	1.2	75			
72	5.2	4.6	2.6	3.0	2.0	1.1	72			
70	5.1	4.5	2.5	2.9	1.8	1.1	70			
65	4.8	4.1	2.3	2.7	1.6	1.0	65			
60	3.5	3.3	2.2	2.4	1.4		60			
55	2.5	2.4	2.0	2.0	1.2		55			
50	1.8	1.7	1.7	1.4	1.1		50			

50.5m	9.5m/16m	6.545m×7.9m	360°	1.8t	J 9.5m/16m					
					9.5m			16m		
					0°	15°	30°	0°	15°	30°
80	5.5	5.0	3.2	3.0	2.4	1.5	80			
78	5.5	4.9	3.1	3.0	2.4	1.4	78			
75	5.2	4.5	2.8	3.0	2.2	1.2	75			
72	3.6	3.2	2.6	3.0	2.0	1.1	72			
70	2.9	2.6	2.4	2.3	1.8	1.1	70			
65	1.5	1.4	1.3	1.2	1.0		65			

起升高度曲线图
Lifting heights



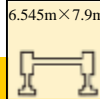


主臂加长节
Boom extension

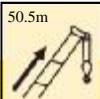

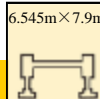




起重性能表

I 9m

Lifting capacities

    					
50.5m+9m					
16m					—
0°		15°		30°	
80	2.5	2.2	1.6	7.5	80
78	2.4	2.1	1.4	7.5	78
75	2.4	2.0	1.2	7.5	75
72	2.4	1.8	1.1	7.2	72
70	2.3	1.7	1.1	6.9	70
65	2.3	1.4	—	5.0	65
60	2.1	1.3	—	3.6	60
55	1.4	1.1	—	2.6	55
50	—	—	—	1.9	50

    					
50.5m+9m					
16m					—
0°		15°		30°	
80	2.5	2.2	1.6	7.5	80
78	2.4	2.1	1.4	7.5	78
75	2.4	2.0	1.2	5.3	75
72	2.2	1.6	1.1	3.7	72
70	1.6	1.2	1.0	2.9	70
65	—	—	—	1.6	65

符号标识

Description of symbols

	上车 Superstructure		底盘 Chassis
	起重能力 Lifting capacity		车桥 Axle
	吊臂长度 Boom length		行驶速度 Driving speed
	工作幅度 Radius		爬坡能力 Grade ability
	吊臂仰角 Boom angle		轮胎 Tires
	主臂起升高度 Hoist height with boom		支腿 Outriggers
	固定副臂长度 Fixed jib length		吊钩 Hook block
	副臂安装角 Jib offset angle		平衡重 Counterweight
	副臂起升高度 Hoist height with jib		卷扬 Winch
	独立臂头 Independent jib head		360°全回转 360° operation of the boom

主要技术参数

Table of main technical parameters

类别 Category	项目 Item	单位 Unit	参数 Parameter	
尺寸参数 Dimensions	外形尺寸 (长×宽×高) Dimensions (length×width×height)	mm	15000×2800×3785	
	轴距 Wheel base	mm	1470+4500+1350	
	轮距 (前/后) Track (Front/ Rear)	mm	2316/2063	
	前悬/后悬 Front/ Rear overhang	mm	2380/2575	
	前伸/后伸 Front/ Rear extension	mm	2560/165	
重量参数 Weight	最大允许总质量 Max. permissible total weight	kg	46000	
	轴荷 Axle load	一轴 1st axle	kg	10000
		二轴 2nd axle	kg	10000
		三轴 3rd axle	kg	13000
四轴 4th axle		kg	13000	
动力参数 Power	发动机型号 Engine model	—	D10.38-50	
	额定功率/转速 Engine rated power/rpm	kW/(r/min)	276/1900	
	最大净功率/转速 Max. net power/rpm	kW/(r/min)	274/1900	
	最大扭矩/转速 Max. torque/rpm	N.m/(r/min)	1560/1200-1500	
行驶参数 Travel	最高车速 Max. travel speed	km/h	≥90	
	最低稳定车速 Min. stable travel speed	km/h	1.7 ~ 3	
	最小转弯直径 Min. turning diameter	m	≤24	
	臂头最小转弯直径 Min. turning diameter at boom tip	m	≤30.5	
	最小离地间隙 Min. ground clearance	mm	302	
	接近角 Approach angle	°	19	
	离去角 Departure angle	°	13	
	制动距离 (制动初速度为30km/h) Braking distance (at 30 km/h)	m	≤10	
	最大爬坡能力 Max. grade ability	%	45	
	百公里油耗 Fuel consumption per 100 km	L	43	
噪音 Noise	加速行驶机外噪声 Exterior noise level	dB(A)	≤84	
	驾驶员耳旁噪声 Noise level at seated position	dB(A)	≤90	

主要技术参数

Table of main technical parameters

类别 Category	项目 Item		单位 Unit	参数 Parameter	
主要性能参数 Main performance	最大额定总起重量 Max. total rated lifting capacity		t	85*	
	最小额定工作幅度 Min. rated working radius		m	3.0	
	转台尾部回转半径 Turning radius at turntable tail	平衡重处 Counterweight	mm	4465	
		副卷处 Auxiliary winch	mm	4343	
	最大起重力矩 Max. load moment	基本臂 Base boom	kN.m	2921	
		最长主臂 Fully-extended boom	kN.m	1744	
		最长主臂+副臂 Fully-extended boom + Jib	kN.m	1234	
	支腿跨距 Outrigger span	纵向 Longitudinal	m	6.545	
		横向 Lateral	m	7.9 (5.6)	
	起升高度 Hoist height	基本臂 Base boom	m	13.2	
		最长主臂 Fully-extended boom	m	49.8	
		最长主臂+副臂 Fully-extended boom + Jib	m	72.3	
	起重臂长度 Boom length	基本臂 Base boom	m	12.95	
最长主臂 Fully-extended boom		m	50.5		
最长主臂+副臂 Fully-extended boom + Jib		m	75.5		
副臂安装角 Jib offset angle		°	0、15、30		
工作速度参数 Working speed	起重臂起臂时间 Boom raising time		s	≤55	
	起重臂全伸时间 Boom fully extended time		s	≤125	
	最大回转速度 Max. slewing speed		r/min	≥2.0	
	支腿收放时间 Outrigger extending and retracting time	水平支腿 Outrigger beam	收 Retracting	s	30
			放 Extending	s	40
		垂直支腿 Outrigger jack	收 Retracting	s	30
			放 Extending	s	40
起升速度 (单绳, 第四层, 空载) Hoisting speed (single line, 4th layer, no load)	主起升机构 Main winch	m/min	135		
	副起升机构 Auxiliary winch	m/min	90		
噪声 Noise	机外辐射 Exterior noise level		dB (A)	109	
	司机位置处 Noise level at seated position		dB (A)	85	

注意事项

Notes

1. 表中额定总起重量值，是在平整的坚固地面上本起重机能够保证的最大总起重量，包括吊钩和吊具的重量，所以为了估算重物重量，必须减去上述的装置重量。
 2. 表中的工作幅度为起吊重物离地时起重物到起重机回转轴线的水平距离，是包括起重臂变形量在内的实际值，因而起吊前应考虑起重臂变形量。
 3. 只允许在5级(瞬时风速14.1m/s，风压125N/m²)风以下进行作业。
 4. 吊重前操作者必须对物体的重量和工作范围了解后选择合适的作业工况，严禁超出表中的数值。幅度及臂长在相邻两个数值之间时，应依据两个数值中较小值确定起重作业。
 5. 应按主臂仰角范围作业，即使是空载，也不应使主臂仰角处于范围外，谨防整机倾翻。
 6. 表中的主臂长度应要按照每节臂的伸缩要求进行伸出。
1. The total rated loads given in the rated load charts are the maximum lifting capacity when the crane is set up on firm and level ground, which includes the weight of the hook block and slings. The weight of above-mentioned devices should be deducted from the rated lifting load.
 2. The working radius shown in the rated load charts is the radius when the load is lifted off the ground, and it is the actual value including loaded boom deflection. Take boom deflection into consideration before beginning a lifting operation.
 3. A lifting operation is permissible only when the wind force is below grade 5 (instantaneous wind speed is 14.1 m/s, wind pressure is 125 N/m²).
 4. Before beginning lifting operation, the operator should know the weight of the load to be lifted and its working range, and then select proper working conditions. Never operate the crane beyond the limit shown in the chart. Use the lower value from the chart when the boom length or working radius is between the range of values.
 5. Observe the boom angle limit. Never operate the crane with the boom angle beyond the recommended limit even if a load is not being carried. Otherwise, the crane will tip.
 6. The boom should be extended according to the telescoping code shown by digits, which means the percentage of boom sections extended.



地址：江苏省徐州市经济技术开发区高新路68号
Add : No. 68 Gaoxin Road,
Economic and Technological Development Zone,
Xuzhou, Jiangsu, China
电话(Tel) : +86-516-83462242/83462350
质量监督电话(Quality Inquiry Tel) : +86-516-
87888268
备件电话(Spare Parts Tel) : +86-516-83461542
邮编(Post Code) : 221004
网址(Web) : www.xcmg.com/qizhongji

服务热线 Service Tel

400-110-9999

400-001-5678



本印刷品不属于合同。出于产品不断改进的需要，我们保留对产品型号、参数、配置进行变更的权利，恕不另行通知。图片仅供参考，具体产品以实物为准。图片中产品可能并非标准配置，部分部件可能需要另行购置。办理牌照和上路行驶需遵守当地法规。

This print does not belong to the contract. We reserve the right to modify the design (such as product model, parameters and configuration) without notice for improvement. The pictures are just for reference. The product in the picture may not be standard configuration. Some parts need to be purchased separately. Conform to the local laws for license application and road traveling.