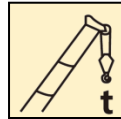


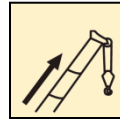
# QY60KH汽车起重机 / Truck Crane

## 技术规格书

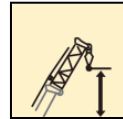
Technical specifications



60t



45.5m



62m



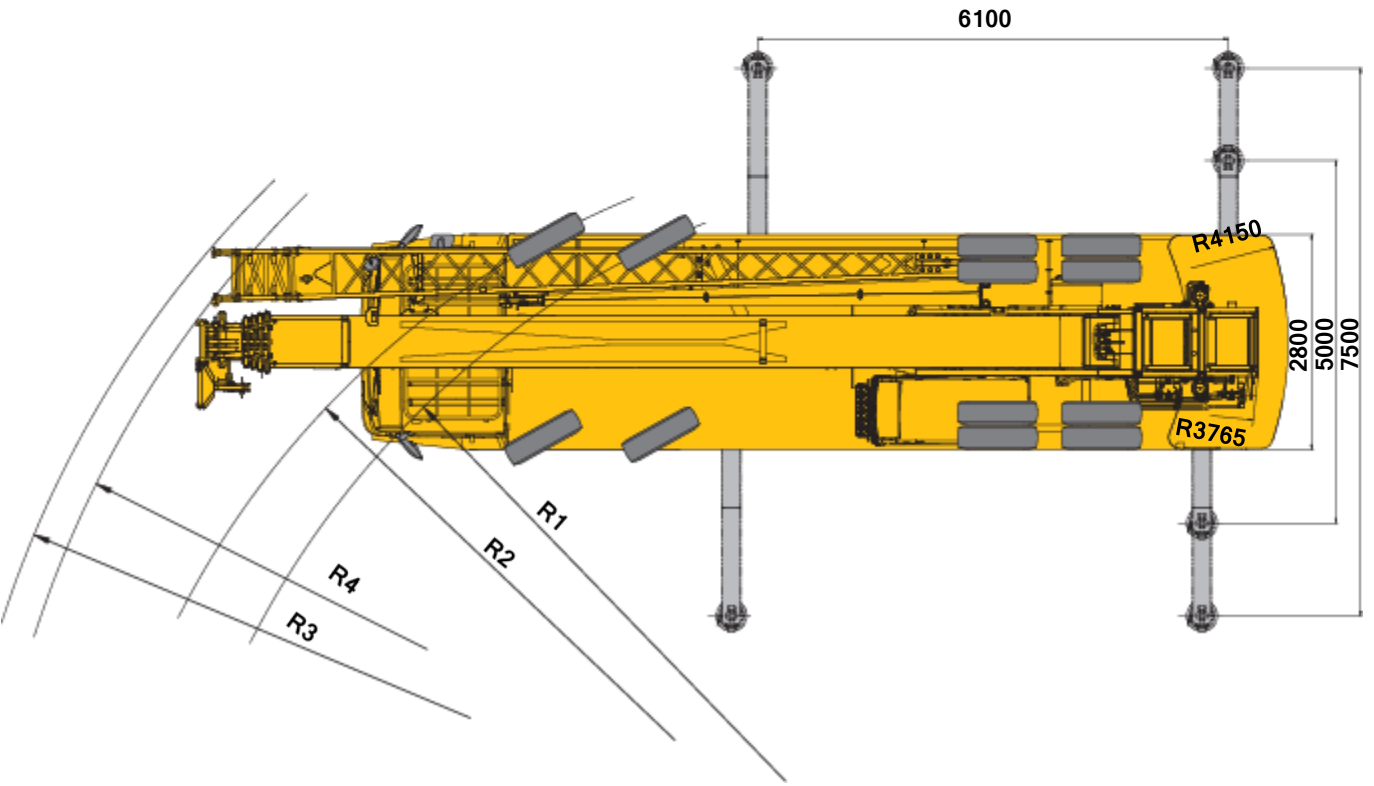
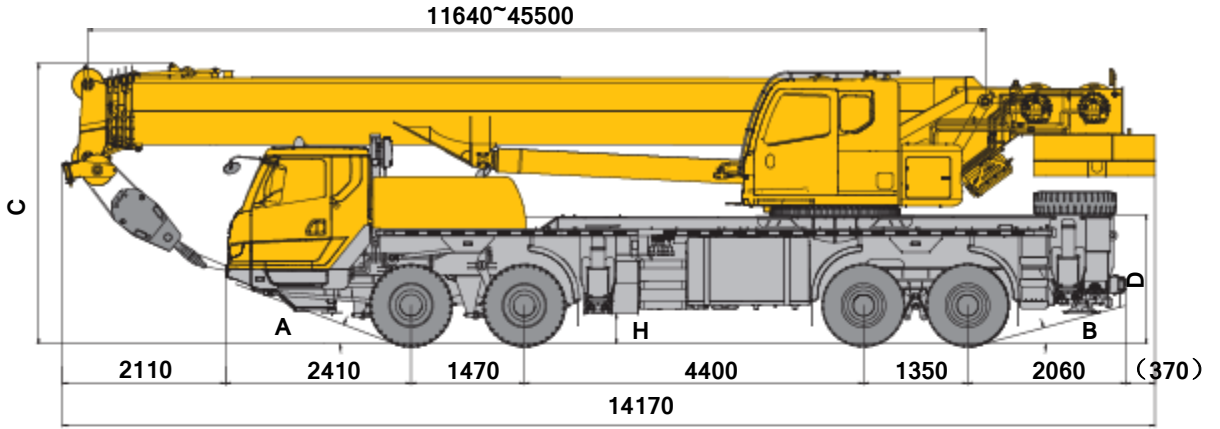
2021年5月 第2版


# 目录

## Contents

<b>目录</b>	
<b>Contents</b>	
尺寸参数	4
Dimensions	
技术规格	5-8
Technical specifications	
车型与选装件	9
Version and optional equipment	
重量/作业速度	10
Weight / Working speeds	
平衡重	11
Counterweight	
臂架组合方案	12
Boom / Jib combinations	
主臂	13-15
Boom	
副臂	16-17
Jib	
符号标识	18
Description of symbols	
主要技术参数表	19-20
Table of main technical parameters	
注意事项	21
Notes	

# 尺寸参数 Dimensions



	A	B	C	D	H	R1	R2	R3	R4
315/80 R22.5	21°	15°	3640	1646	385	11260	12000	14350	14850

## 技术规格

### Technical specifications



#### 底盘

<b>车架</b>	徐工设计、制造，全覆盖式走台板，防扭转箱型结构，高强度钢材制造。
<b>支腿</b>	4支腿，H形布置，采用双级水平支腿，水平伸缩和垂直伸缩由液压控制，底盘两侧装有手动操纵手柄，且装有水平仪、照明灯和调速按钮，且垂直支腿带有液压双向锁。 支脚盘尺寸：435×435mm 最大起重量时支腿反力：550kN
<b>发动机</b>	直列六缸水冷电控柴油发动机,中国重汽制造； D10.38-50,额定功率276kW/2000rpm，最大扭矩1560Nm/1200-1500rpm，国五排放标准 最大基准扭矩：1720N.m； 燃油箱容积：350L； 尿素箱容积：45L。  MC11.36-60,额定功率268kW/1900rpm，最大扭矩1807Nm/1000~1400rpm，国六排放标准； 最大基准扭矩：2000N.m； 燃油箱容积：350L； 尿素箱容积：45L。
<b>变速箱</b>	陕齿机械式变速箱 杭发国五配置:9个前进档，1个倒档，带同步器； 重汽曼国六配置:10个前进档，2个倒档，带同步器。
<b>车桥</b>	高强度车桥，1,2桥转向，3,4桥驱动。
<b>悬挂</b>	前桥采用钢板弹簧。后桥采用橡胶弹簧悬架加V型推力杆结构，增加底盘行驶稳定性。
<b>轮胎</b>	12个轮胎，1个备胎， 轮胎规格：315/80R22.5





#### 底盘

<b>制动</b>	行车制动：双回路气压制动，作用于所有车轮。 驻车制动：弹簧储能制动，作用于3,4轴车轮。 辅助制动：发动机排气制动和缓速制动。
<b>转向</b>	1、2桥机械转向+液压助力。
<b>驾驶室</b>	配置大视野的前挡风安全玻璃、电动电加热后视镜，电动雨刮器，电动玻璃升降器，带有冷暖空调，可实现吹面吹脚，除霜、除雾功能，带有收放机等。主驾采用机械减震式座椅，副驾采用双人座椅可展开为简易卧铺，满足人员的操纵舒适性及乘坐方便性。
<b>电气系统</b>	直流24伏特，串联12伏特的电池组2个。 发电机，D10.38-50：28伏特-70安培； MC11.36-60:28伏特-80安培；

# 技术规格

## Technical specifications

	<b>上车</b>	徐工设计、制造，高强度钢材制造。
<b>液压系统</b>	底盘发动机通过变速箱驱动齿轮泵用于起升、变幅、伸缩、回转动作。专用节流负载敏感设计，系统最低流量更稳定，系统刚度更合理，作业微动性、平顺性更突出；采用分合流技术，起升、变幅、伸缩双泵合流；风冷式液压油散热器； 液压油箱容积：880L	
<b>操纵方式</b>	先导液比例操纵，无级调速，由左右2个操纵手柄控制。	
<b>起升机构</b>	双折线绳槽卷筒，由液压马达驱动，内置行星齿轮减速器和常闭式制动器，并带有平衡阀。钢丝绳端带绳头，直接安装于索套内，提高了更换速度，方便快捷。主、副起升机构独立操作。	主卷 副卷
<b>回转机构</b>	单排四点接触球外齿式回转支承，由液压马达驱动，内置行星齿轮减速器和常闭式制动器，可连续回转360°，具有动力控制或自由滑转的功能，可无级调速。	
<b>变幅机构</b>	单支双作用前置液压变幅油缸，带有平衡阀。	
<b>操纵室</b>	新型钢制操纵室，装有前景窗，安全玻璃，车窗装有遮阳板，推拉式车门，操纵员座椅靠背可倾斜定位，操纵杆安装在座椅两侧的扶手上，带推拉踏板，前窗、顶窗装有雨刮器。 标配冷暖空调。	
<b>电气系统</b>	直流24V，2个电池串联	
<b>安全装置</b>	液压平衡阀、液压溢流阀、液压双向锁、力矩限制器；三圈保护器，防止钢丝绳过放；臂头设置高度限位，防止钢丝绳过卷；卷扬监视装置，实时监控卷扬状态。	
<b>力矩限制器</b>	当实际力矩接近过载时，发出听视觉警报，并在过载之前自动停止危险动作。具有超载记忆功能（黑匣子）和故障自诊断功能。	

	<b>上车</b>		
<b>起重钩</b>	55t钩		
	5t钩		
<b>组合配重</b>	总重9.5t，有6t、9.5t共2种组合方式。	标配6t，选配3.5t	
<b>主臂</b>	主臂长度：11.6m~45.5m。 由1节基本臂和4节伸缩臂组成，采用卵圆形截面，抗扭曲设计，高强度结构钢制造。双缸绳排伸缩机构。		
<b>副臂</b>	副臂长度：9.5m/16m 2节桁架焊接结构，具有0°、15°、30°三种固定副臂安装角		
<b>臂端单滑轮</b>	单滑轮，安装在主臂顶端用于单股钢丝绳起重作业，起重性能与主臂相同，但最大起重量不超过5000kg。		

# 技术规格

## Technical specifications



### Chassis

<b>Frame</b>	Designed and manufactured by XCMG, it is made of high strength steel with fully covered walking surface and anti-torsion box-typed structure.
<b>Outriggers</b>	Four outriggers, H-type arrangement, two-stage outrigger beam. Hydraulic control is used to extend and retract the outrigger beams and jacks. There are manual control levers fitted at each side of the chassis, as well as a level gauge, an illuminator and a speed regulating button. Each outrigger jack is equipped with a double-way hydraulic valve. Outrigger float dimensions: 435×435mm Reaction force of outrigger at max. lifting load: 550KN
<b>Engine</b>	In-line, 6-cylinder, water cooled, electric control diesel engine, made by SINOTRUK. D10.38-50, with rated power of 276 kW/2000 rpm and max. torque of 1560 Nm/1200-1500 rpm, compliant to China V emission standard. Max. reference torque: 1720 N.m; Fuel tank volume: 350 L; AdBlue tank volume: 45 L.  MC11.36-60, with rated power of 268 kW/1900 rpm and max. torque of 1807 Nm/1000-1400 rpm, compliant to China VI emission standard. Max. reference torque: 2000 N.m; Fuel tank volume: 350 L; AdBlue tank volume: 45 L.
<b>Transmission</b>	Mechanical transmission, made by Shaanxi Fast Gear Co., Ltd.. D10.38-50: 9-forward speed and 1-reverse speed with a synchronizer. MC11.36-60: 10-forward speed and 2-reverse speed with a synchronizer.
<b>Axles</b>	High strength axles, made by a famous manufacturer. 1st and 2nd axles are for steering, and 3rd and 4th axles are for driving.
<b>Suspensions</b>	Leaf spring suspensions are adopted for front axles. Rubber spring suspensions with V-type push rods are adopted for rear axles, leading to improved chassis stability and reduced tire wear.
<b>Tires</b>	12 tires and 1 spare tire. Tire specifications: 315/80R22.5





### Chassis

<b>Brakes</b>	Service brake: double-circuit air pressure brake acting on all wheels. Parking brake: spring-loaded brake, acting on the wheels of axles 3 and 4; Auxiliary brake: engine exhaust brake and engine retarder brake.
<b>Steering</b>	Mechanical steering mechanism with a hydraulic booster for 1st and 2nd axles.
<b>Driver's cab</b>	It is equipped with a windshield offering outstanding visibility, electrical adjustable rear mirrors, electric wipers, electrically operated door window lifters, heater & air conditioner with upper/ lower blowing and defrosting/defogging modes, and radio cassette player. A mechanical shock absorber seat is supplied for driver and a double-seat designed for the co-driver may supply comfort and reduce fatigue.
<b>Electrical system</b>	24 V DC, two sets of 12 V battery in series. Generator, D10.38-50: 28V-70A; MC11.36-60: 28V-80A.

# 技术规格

## Technical specifications

 Superstructure					
<b>Frame</b>	Designed and manufactured by XCMG, made of high strength steel.				
<b>Hydraulic system</b>	Gear pumps driven by the chassis engine through the transmission are used for hoisting, elevating, telescoping and slewing operations. Special throttle load sensitive design, more stable system minimum flow, more reasonable system rigidity, more prominent fine-control and smoothness; confluence technology for lifting, elevating and telescoping double-pump confluence; an air-cooled hydraulic oil cooler is fitted. Oil tank capacity: 880L.				
<b>Operating mode</b>	Pilot hydraulic-proportional control is used for controlling the superstructure, and stepless speed regulation is available. All crane movements are controlled through two control levers at left and right sides.				
<b>Hoisting system</b>	<table border="0"> <tr> <td>A grooved drum driven by a hydraulic motor, planetary gear reducer, normally closed brake, and balance valve are equipped. Main winch and auxiliary winch are independently operated.</td> <td>Main winch</td> </tr> <tr> <td></td> <td>Auxiliary winch</td> </tr> </table>	A grooved drum driven by a hydraulic motor, planetary gear reducer, normally closed brake, and balance valve are equipped. Main winch and auxiliary winch are independently operated.	Main winch		Auxiliary winch
A grooved drum driven by a hydraulic motor, planetary gear reducer, normally closed brake, and balance valve are equipped. Main winch and auxiliary winch are independently operated.	Main winch				
	Auxiliary winch				
<b>Slewing system</b>	Single-row four-point ball contact external tooth slewing ring driven by a hydraulic motor, with a built-in planetary gear reducer and constant-closed brake equipped, may continuously slew 360°. The slewing system has functions of power control or free sliding, and stepless speed regulation.				
<b>Elevating system</b>	A front support double-acting hydraulic cylinder is equipped for elevating operation, with a balance valve fitted.				
<b>Operator's cab</b>	New steel cab with a full-view windshield, safety glass, sun shield and adjustable operator's seat. Windshield wiper and roof window wiper are fitted. Crane control levers are integrated into armrests. A sliding door and a pull-out step are designed for easy and safe access to the cab. Heater and air conditioner are standard.				
<b>Electrical system</b>	24V DC, two sets of 12V battery in series.				
<b>Safety devices</b>	Hydraulic balance valve, hydraulic relief valve, double-way hydraulic valve, LMI, lowering limiter to prevent wire rope from over-releasing, anti-two block at boom head to prevent wire rope from over-winding, inch monitoring device.				

 Superstructure		
<b>Load moment limiter system</b>	When the actual load moment is approaching overloading value, audible and visual warning will be sent out, and the dangerous operation will be automatically stopped ahead of overloading. Overload memory function (black box) and fault self-diagnosis function are available.	
<b>Hook blocks</b>	55t	
	5 t	
<b>Combined counterweight</b>	Total weight is 9.5t. There are two counterweight configurations of 6t and 9.5t.	6t is standard, 3.5t is optional
<b>Boom</b>	Boom length: 11.6 m~45.5 m. Comprised of one basic boom and four telescoping boom sections with oval profile, the boom adopts anti-distortion design and is made of high strength structural steel. Double-cylinder plus ropes telescoping system.	
<b>Jib</b>	Jib length: 9.5 m/16 m Two lattice sections welding structure. Three offset angles of 0°, 15° and 30° are available.	
<b>Single top</b>	Fitted at boom head, used for single line operation. Its lifting performance is the same as that for boom, but the maximum lifting load does not exceed 5000 kg.	

## 车型与选装件

### Version and optional equipment

车型 Version	功能描述/Function description	选择 Selection
<b>标准型</b> Standard	五节主臂45.5m, 固定副臂16m 5-section boom of 45.5 m , fixed jib of 16 m	

注释：该产品仅标准型一种车型。

Note: only the standard version is available.

## 重量 Weight



车桥 Axle	1	2	3	4	总重量 Total weight
t	8.8	8.8	13	13	43.6




转台尾部不携带3.5t活动式平衡重，主吊钩固定在车头前方，副吊钩固定在车架尾部，拆除左前、右前两个支脚盘放置于底盘工具箱内。Removable counterweight of 3.5 t is not attached at the rear of turntable tail, main hook is attached to the front of the crane, auxiliary hook is attached and secured at the frame tail, and two front outrigger floats are stored in chassis tool box.






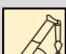
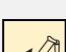
吊钩 Hook block	倍率 Parts of line	吊钩重量 Weight (kg)	吊钩尺寸 Dimensions (mm)	备注 Remarks
55t	12	550	504×562×1480	单钩 Single hook
5t	1	100	300×300×535	单钩 Single hook

## 作业速度 Working speeds



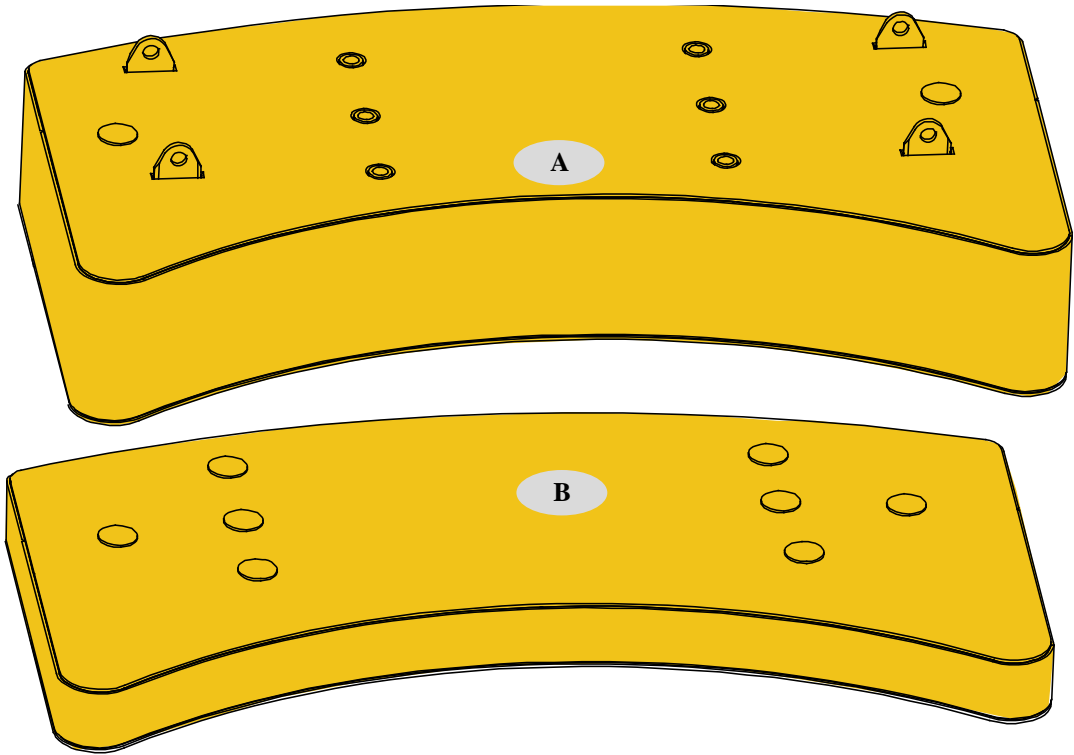
		
315/80 R 22.5	2.5 ~ 90 km/h	45%



作业机构 Drive	作业速度 Working speed	最大单绳拉力 Max. single line pull	钢丝绳直径/长度 Rope diameter/ length
	0-130 m/min, 单绳, 第四层 m/min, single line, 4th layer	50kN	18mm/208 m
	0-130 m/min, 单绳, 第四层 m/min, single line, 4th layer	50kN	18mm/140m
	0-1.6 r/min		
	从-1°抬起至80°约45s Approx. 45s for boom elevation from -1° to 80°		
	从11.6m伸出至45.5m约105s Approx. 105s for boom extension from 11.6m to 45.5m		

# 平衡重

## Counterweight

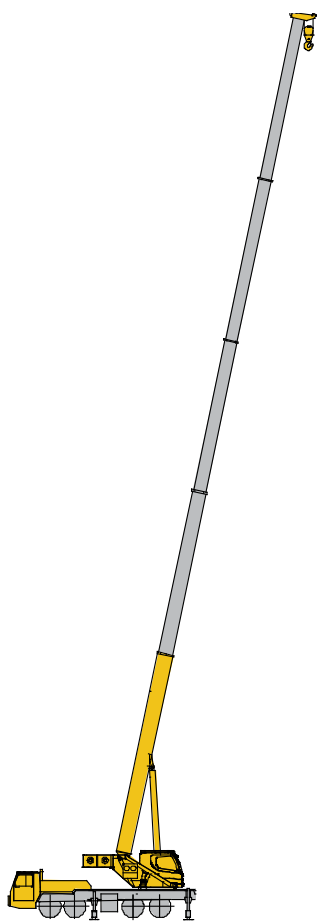


平衡重 Counterweight	A	B
尺寸 (长×宽×高) m Dimensions (L×W×H) m	2780×1567×350	2780×1567×190
重量 t Weight t	6	3.5

工况模式 Working mode	9.5t	6t
组合形式 Combinations	A+B	A

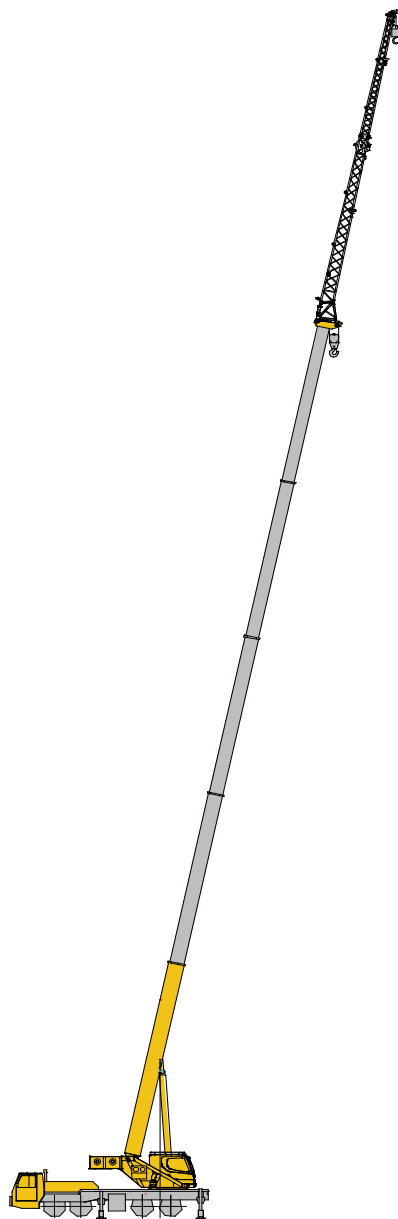
## 臂架组合方案

## Boom / Jib combinations



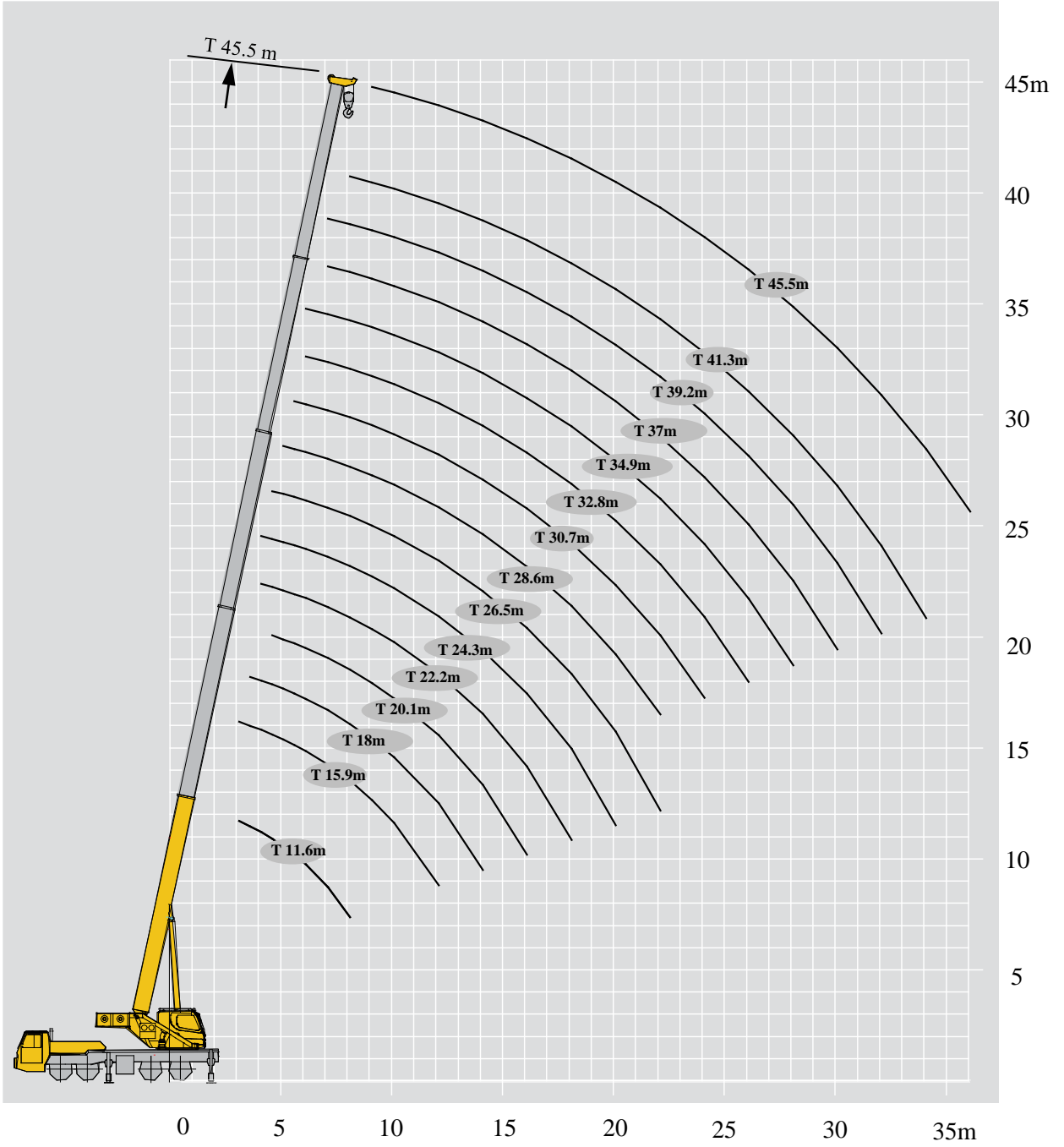
主臂  
Telescopic boom

T: 11.6~45.5m



副臂  
Jib


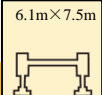

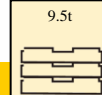

T: 45.5m  
J: 9.5/16 m



# 起重性能表

## Lifting capacities

T 11.6~45.5m

																
	11.6m	15.9m	20.1m	26.5m	32.8m	39.2m	45.5m	18.0m	24.3m	30.7m	37.0m	22.2m	28.6m	34.9m	41.3m	
3	60*															3
3.5	50.5	46						26				26				3.5
4	48	44	35					26	25			26				4
4.5	43.5	42	35	26				26	25			26				4.5
5	40.6	39	34	26				26	24.5			26	24.5			5
6	32	31.5	30.5	26	20.2			26	23.5	18.3		26	24.5			6
7	27.5	26	27	24.5	20.2	15.3		26	22	17.1	13	26	24	16.1		7
8	23.5	23.2	23	22.5	20.2	15.2		22.7	20.2	15.6	12.3	23.1	21.2	15.3	11.4	8
9	19.8	19	19.1	20.2	18	14.4	10.1	20.5	18.8	14.4	11.6	19.9	19.6	14.4	11.2	9
10		16.8	16.6	17.8	16.5	13.8	9.9	17.5	17.2	13.5	11	17	17.5	13.3	10.7	10
12		12.2	11.9	13.1	13.5	12.6	9.3	14.1	14.8	11.8	9.9	13.5	14.2	11.9	9.8	12
14			8.7	9.8	10.5	10.9	8.5	10.8	11.4	10.3	8.9	10.2	10.9	10.6	9	14
16			6.4	7.5	8.2	8.6	8.1		9.1	9.1	8	7.9	8.6	9	8.2	16
18				5.9	6.5	6.9	7.3		7.4	7.7	7.1	6.3	6.9	7.3	7.3	18
20				4.6	5.2	5.6	5.9		6.1	6.4	6.5		5.6	6	6.3	20
22				3.6	4.2	4.6	4.9			5.4	5.6		4.6	5	5.2	22
24					3.4	3.8	4.1			4.6	4.8		3.8	4.2	4.4	24
26					2.7	3.1	3.4			3.9	4.1			3.5	3.7	26
28						2.6	2.8				3.5			2.9	3.1	28
30						2.1	2.3				3			2.4	2.7	30
32						1.6	1.9				2.6				2.2	32
34							1.5								1.9	34
36							1.2								1.5	36
38							0.9									38
40							0.7									40

说明: \*为名义载荷

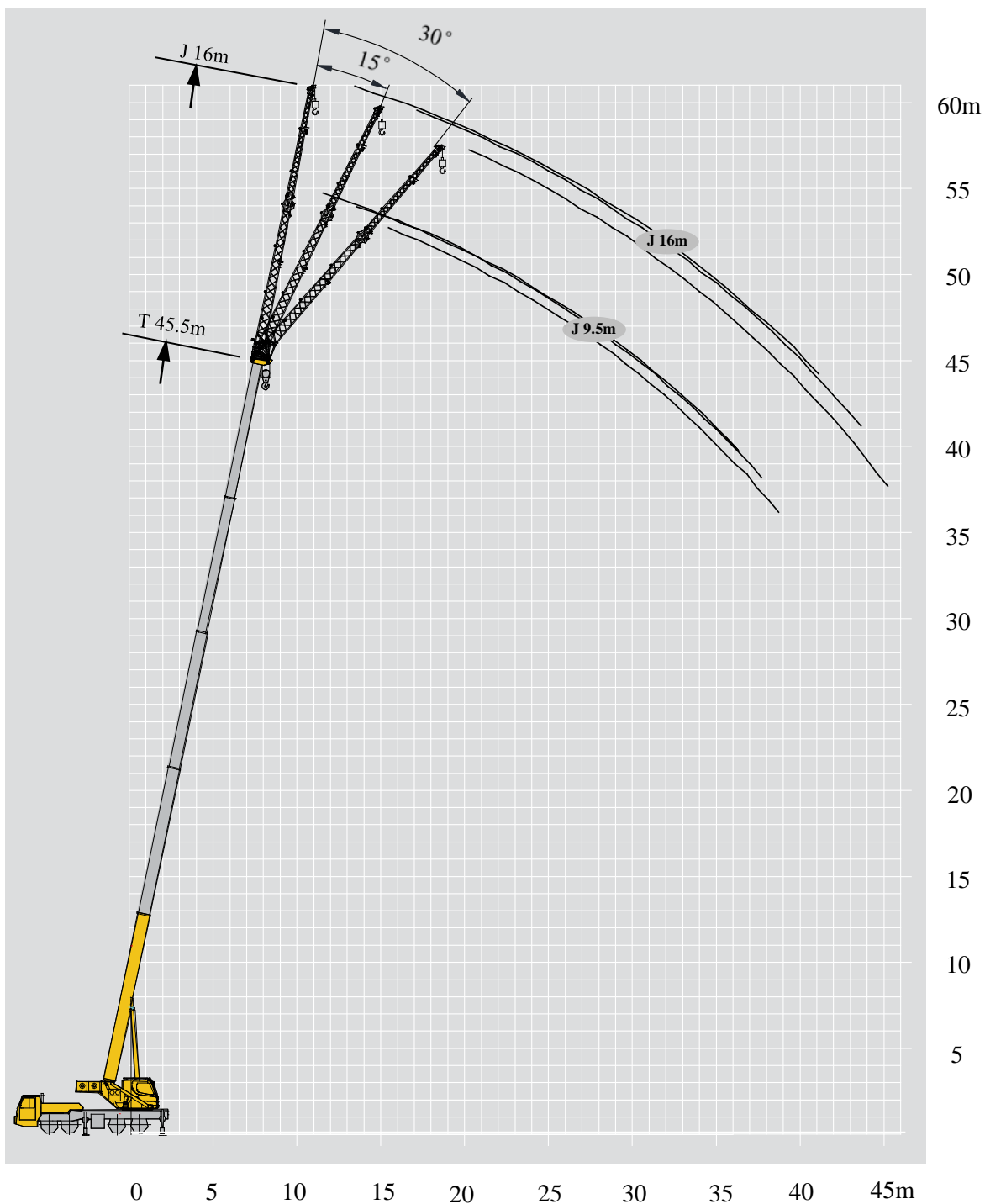
Note: \* means capacity class

# 起重性能表

## Lifting capacities

T 11.6~45.5m

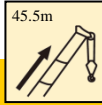
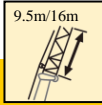
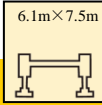
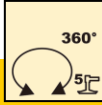
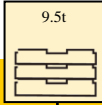
	11.6-45.5m		6.1m×7.5m		360°		6t										
	11.6m	15.9 m	20.1m	26.5m	32.8 m	39.2m	45.5 m	18.0 m	24.3m	30.7 m	37.0 m	22.2 m	28.6 m	34.9 m	41.3 m		
3	50															3	
3.5	50	46						26				26				3.5	
4	48	44	35					26	25			26				4	
4.5	43.5	42	35	26				26	25			26				4.5	
5	40.5	39	34	26				26	24.5			26	24			5	
6	32	31.5	30.5	26	20.2			26	23.5	18.3		26	22			6	
7	25.8	25.6	27	24	20.2	15.3		26	22	17.1	13	26	21.5	16.1		7	
8	22.2	21.9	21.6	21.8	20.2	15.2		22.7	20.2	15.6	12.3	23.1	21.2	15.3	11.4	8	
9	18.3	17.8	17.5	18.8	18	14.4	10.1	20	18.8	14.4	11.6	19.3	19.6	14.4	11.2	9	
10		14.4	14.1	15.4	16.1	13.8	9.9	16.5	17.2	13.5	11	15.8	16.6	13.3	10.7	10	
12		10	9.7	10.8	11.5	12	9.3	11.9	12.5	11.8	9.9	11.3	12	11.9	9.8	12	
14			6.9	8	8.6	9.1	8.5	9	9.6	9.9	8.9	8.4	9.1	9.5	9	14	
16			5	6	6.7	7.1	7.4		7.6	7.9	8	6.4	7.1	7.4	7.7	16	
18				4.6	5.2	5.6	5.9		6.1	6.4	6.6	5	5.6	6	6.2	18	
20				3.4	4.1	4.5	4.8		4.9	5.3	5.5		4.4	4.8	5.1	20	
22					3.2	3.6	3.8			4.4	4.6		3.5	3.9	4.2	22	
24					2.4	2.8	3.1			3.6	3.8		2.8	3.2	3.4	24	
26					1.8	2.2	2.5			3	3.2			2.6	2.8	26	
28						1.7	2				2.7			2.1	2.3	28	
30						1.3	1.6				2.3			1.7	1.9	30	
32						0.9	1.2				1.9				1.5	32	
34							0.9								1.2	34	
36							0.6								0.9	36	

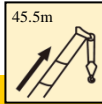
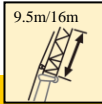
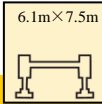

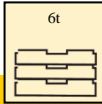


# 起重性能表

## Lifting capacities

T 45.5m

	    						
	9.5m			16m			
	0°	15°	30°	0°	15°	30°	
80	5	3.5	3	3	2.2	1.5	80
78	4.8	3.4	2.6	3	2	1.4	78
75	4.3	3.3	2.5	2.8	1.8	1.3	75
72	4	3	2.4	2.5	1.6	1.2	72
70	3.6	2.8	2.3	2.2	1.5	1.2	70
65	3.3	2.6	2.1	1.9	1.3	1.1	65
60	2.3	2.2	2	1.6	1.2	1	60
55	1.6	1.5	1.4	1.2	1.1	0.9	55
50	1.1	1	0.9	0.8	0.7	0.6	50

	    						
	9.5m			16m			
	0°	15°	30°	0°	15°	30°	
80	5	3.5	3	3	2.2	1.5	80
78	4.8	3.4	2.6	3	2	1.4	78
75	4.3	3.3	2.5	2.8	1.8	1.3	75
72	4	3	2.4	2.5	1.6	1.2	72
70	3.6	2.8	2.3	2.2	1.5	1.2	70
65	2.5	2.2	2.1	1.9	1.3	1.1	65
60	1.6	1.5	1.4	1.3	1.1	1	60
55	1	1	0.9	0.8	0.7	0.6	55

# 符号标识

## Description of symbols

### 常规标识

#### General symbols

	上车 Superstructure		底盘 Chassis
	起重能力 Lifting capacity		车桥 Axle
	吊臂长度 Boom length		行驶速度 Driving speed
	工作幅度 Radius		爬坡能力 Grade ability
	吊臂仰角 Boom angle		轮胎 Tires
	主臂起升高度 Hoisting height with boom		支腿 Outriggers
	固定副臂长度 Fixed jib length		吊钩 Hook block
	副臂安装角 Jib offset angle		平衡重 Counterweight
	副臂起升高度 Hoisting height with jib		卷扬 Winch
	不使用第五支腿侧后方作业 Boom over side or over rear of the crane without 5th jack		使用第五支腿360°全回转 360° operation of the boom with 5th jack down

# 主要技术参数表

## Table of main technical parameters

类别 Category	项目 Item	单位 Unit	参数 Parameter		
尺寸参数 Dimensions	外形尺寸 (长×宽×高) Dimensions (length×width×height)	mm	14170×2800×3640		
	轴距 Wheel base	mm	1470+4400+1350		
	轮距 (前/后) Track (Front/ Rear)	mm	2322/2063		
	前悬/后悬 Front/ Rear overhang	mm	2410/2060		
	前伸/后伸 Front/ Rear extension	mm	2110/370		
重量参数 Weight	最大允许总质量 Total vehicle mass in travel configuration	kg	43600		
	轴荷 Axle load	一轴 1st axle	kg	8800	
		二轴 2nd axle	kg	8800	
		三轴 3rd axle	kg	13000	
四轴 4th axle		kg	13000		
动力参数 Power	发动机型号 Engine model	—	国五 D10.38-50	国六 MC11.36-60	
	额定功率/转速 Engine rated power/rpm	kW/(r/min)	276/2000	268/1900	
	最大净功率/转速 Max. net power/rpm	kW/(r/min)	274/2000	265/1900	
	最大输出扭矩/转速 Max. output torque/rpm	N.m/(r/min)	1560/1200-1500	1807/1000~1400	
行驶参数 Travel	最高车速 Max. travel speed	km/h	≥90		
	最低稳定车速 Min. stable travel speed	km/h	2.5 ~ 3		
	最小转弯直径 Min. turning diameter	m	≤24		
	臂头最小转弯直径 Min. turning diameter at boom tip	m	≤30		
	最小离地间隙 Min. ground clearance	mm	293		
	接近角 Approach angle	°	21		
	离去角 Departure angle	°	15		
	制动距离 (制动初速度为30km/h) Braking distance (at 30 km/h)	m	≤10		
	最大爬坡能力 Max. grade ability	%	≥45		
	百公里油耗 Fuel consumption per 100 km	L	40		
噪音 Noise	加速行驶机外噪声 Exterior noise level	dB(A)	≤88		
	驾驶员耳旁噪声 Noise level at seated position	dB(A)	≤90		

# 主要技术参数表

## Table of main technical parameters

类别 Category	项目 Item		单位 Unit	参数 Parameter	
主要性能参数 Main performance	最大额定总起重量 Max. total rated lifting capacity		t	60*	
	最小额定工作幅度 Min. rated working radius		m	3	
	转台尾部回转半径 Turning radius at turntable tail	平衡重处 Counterweight	mm	4150	
		主卷处 Main winch	mm	3765	
	最大起重力矩 Max. load moment	基本臂 Base boom	kN.m	1985	
		最长主臂 Fully-extended boom	kN.m	1288	
		最长主臂+副臂 Fully-extended boom + Jib	kN.m	799	
	支腿跨距 Outrigger span	纵向 Longitudinal	m	6.1	
		横向 Lateral	m	7.5	
	起升高度 Hoisting height	基本臂 Base boom	m	12.1	
		最长主臂 Fully-extended boom	m	46	
		最长主臂+副臂 Fully-extended boom + Jib	m	62	
	起重臂长度 Boom length	基本臂 Base boom	m	11.6	
		最长主臂 Fully-extended boom	m	45.5	
		最长主臂+副臂 Fully-extended boom + Jib	m	61.5	
副臂安装角 Jib offset angle		°	0、15、30		
工作速度参数 Working speed	起重臂起臂时间 Boom raising time		s	≤45	
	起重臂全伸时间 Boom fully extending time		s	≤105	
	最大回转速度 Max. slewing speed		r/min	≥1.6	
	支腿收放时间 Outrigger extending and retracting time	水平支腿 Outrigger beam	收 Retracting	s	≤25
			放 Extending	s	≤25
		垂直支腿 Outrigger jack	收 Retracting	s	≤35
			放 Extending	s	≤35
起升速度 (单绳,第四层,空载) Hoisting speed (single line, 4th layer, no load)	主起升机构 Main winch		m/min	≥130	
	副起升机构 Auxiliary winch		m/min	≥130	
噪声 Noise	机外辐射 Exterior noise level		dB (A)	≤109	
	司机位置处 Noise level at seated position		dB (A)	≤85	

## 注意事项 Notes

1. 表中额定总起重量值，是在平整的坚固地面上本起重机能够保证的最大总起重量，包括吊钩和吊具的重量，所以为了估算重物重量，必须减去上述的装置重量。
2. 表中的工作幅度为起吊重物离地时起重物到起重機回轉軸線的水平距離，是包括起重臂變形量在內的實際值，因而起吊前應考慮起重臂變形量。
3. 只允許在5級(瞬時風速14.1m/s，風壓125N/m<sup>2</sup>)風以下進行作業。
4. 吊重前操作者必須對物體的重量和工作範圍了解後選擇合適的作業工況，嚴禁超出表中的數值。幅度及臂長在相鄰兩個數值之間時，應依據兩個數值中較小值確定起重作業。
5. 應按主臂仰角範圍作業，即使是空載，也不應使主臂仰角處於範圍外，謹防整機傾翻。
6. 表中的主臂長度應要按照每節臂的伸縮要求進行伸出。

1. The total rated loads given in the rated load charts are the maximum lifting capacity when the crane is set up on firm and level ground, which includes the weight of the hook block and slings. The weight of above-mentioned devices should be deducted from the rated lifting load.
2. The working radius shown in the rated load charts is the radius when the load is lifted off the ground, and it is the actual value including loaded boom deflection. Take boom deflection into consideration before beginning a lifting operation.
3. A lifting operation is permissible only when the wind force is below grade 5 (instantaneous wind speed is 14.1 m/s, wind pressure is 125 N/m<sup>2</sup>).
4. Before beginning lifting operation, the operator should know the weight of the load to be lifted and its working range, and then select proper working conditions. Never operate the crane beyond the limit shown in the chart. Use the lower value from the chart when the boom length or working radius is between the range of values.
5. Observe the boom angle limit. Never operate the crane with the boom angle beyond the recommended limit even if a load is not being carried. Otherwise, the crane will tip.
6. The boom should be extended according to the telescoping code shown by percentage (or digits, which means the percentage of boom sections extended).



地址: 江苏省徐州市经济技术开发区高新路68号  
Add: No. 68 Gaoxin Road, Economic and Technological  
Development Zone, Xuzhou, Jiangsu, China  
电话(Tel): +86-516-83462242/83462350  
质量监督电话(Quality Inquiry Tel): +86-516-87888268  
备件电话(Spare Parts Tel): +86-516-83461542  
邮编(Post Code): 221004  
网址(Website): www.xcmg.com/qizhongji

服务热线 Service Tel

400-110-9999

400-001-5678



本印刷品不属于合同。出于产品不断改进的需要，我们保留对产品型号、参数、配置进行变更的权利，恕不另行通知。图片仅供参考，具体产品以实物为准。图片中产品可能并非标准配置，部分部件可能需要另行购置。办理牌照和上路行驶需遵守当地法规。

This print does not belong to the contract. We reserve the right to modify the design (such as product model, parameters and configuration) without notice for improvement. The pictures are just for reference. The product in the picture may not be standard configuration. Some parts need to be purchased separately. Conform to the local laws for license application and road traveling.